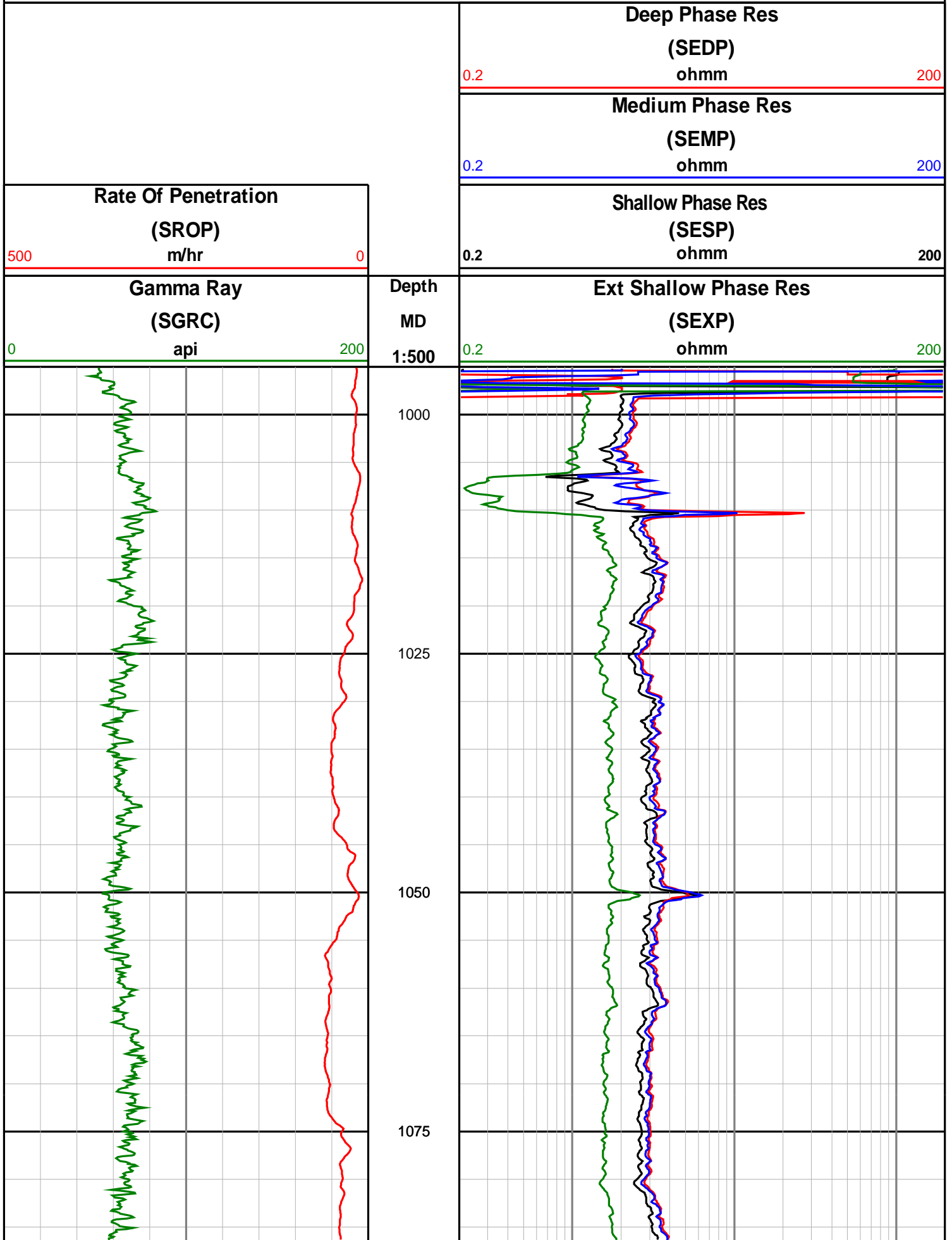


Anzon Australia Ltd

Basker-4

Realtime LWD Log (Permanent Datum - LAT)





1100

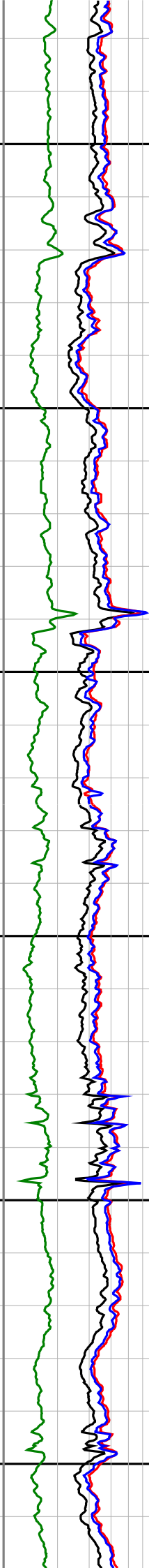
1125

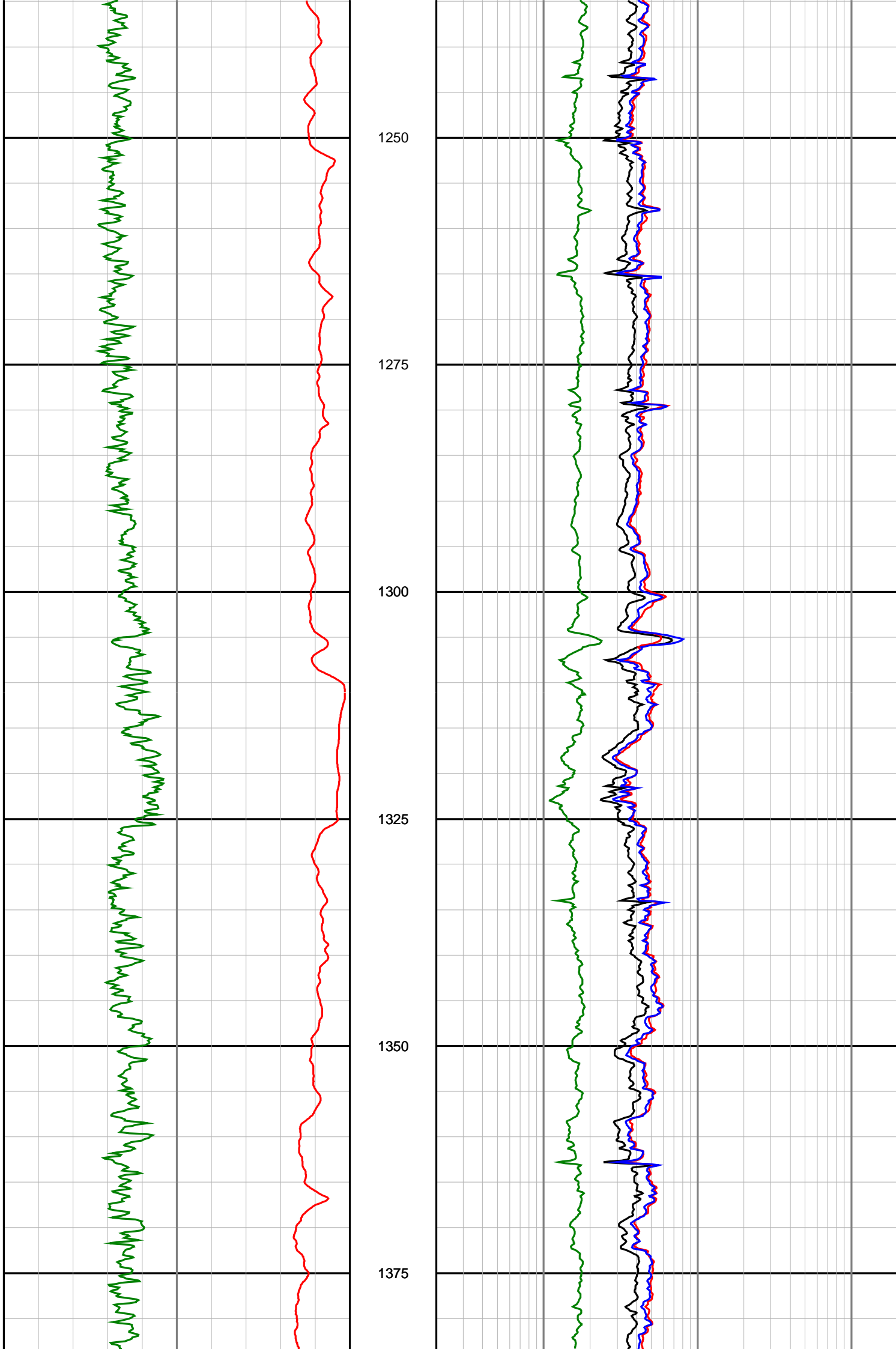
1150

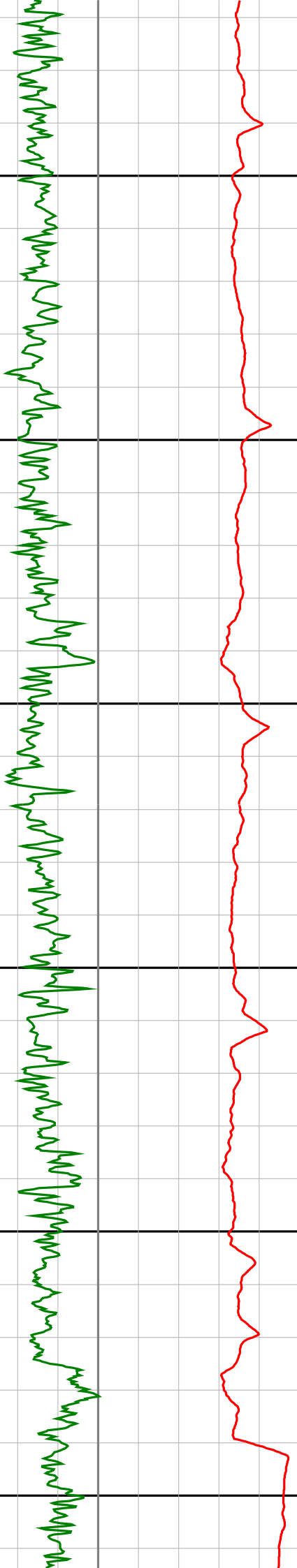
1175

1200

1225







1400

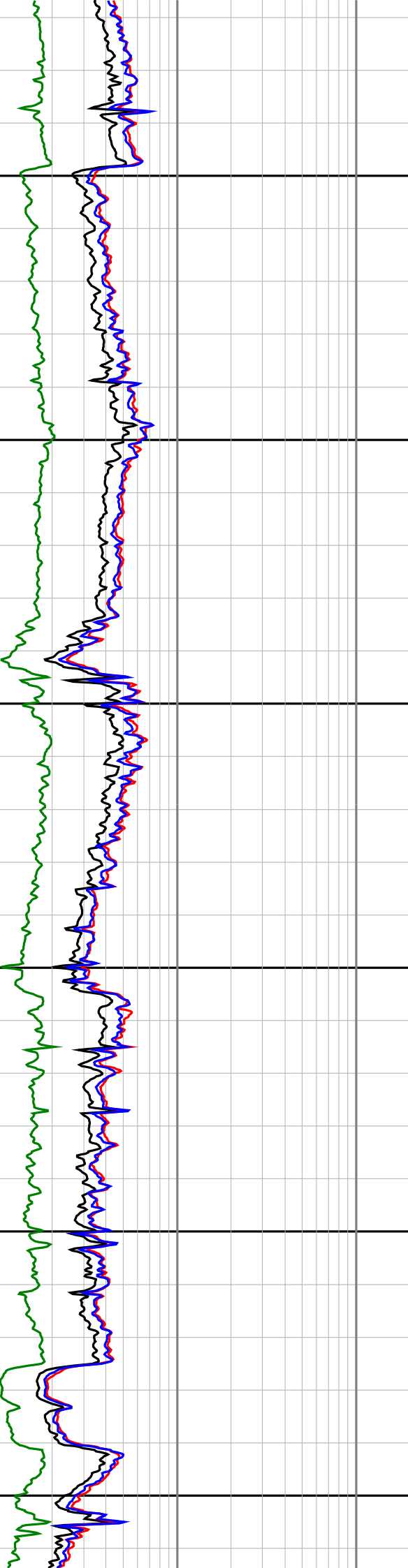
1425

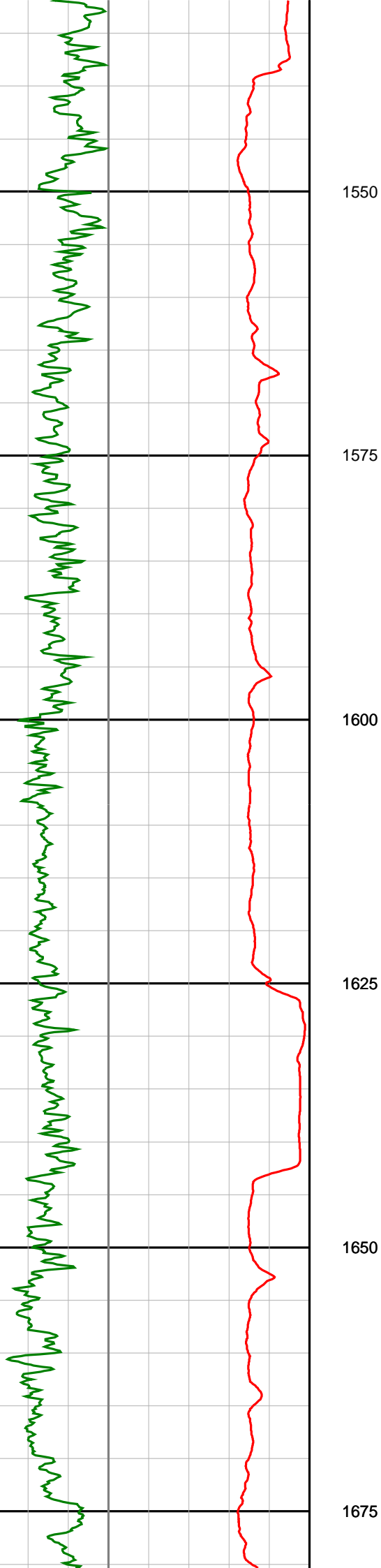
1450

1475

1500

1525





1550

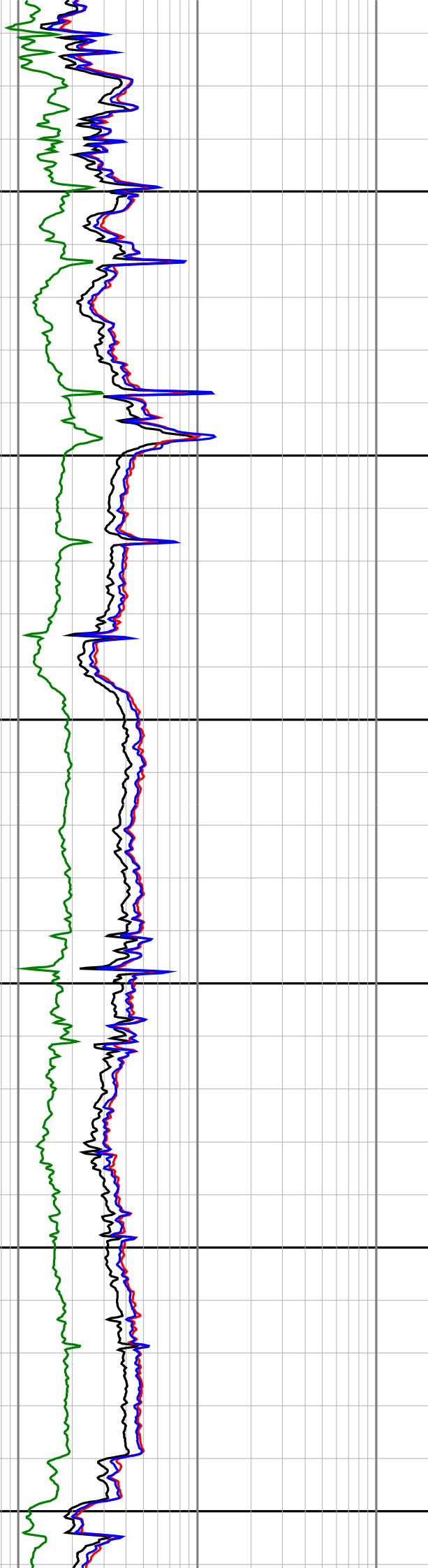
1575

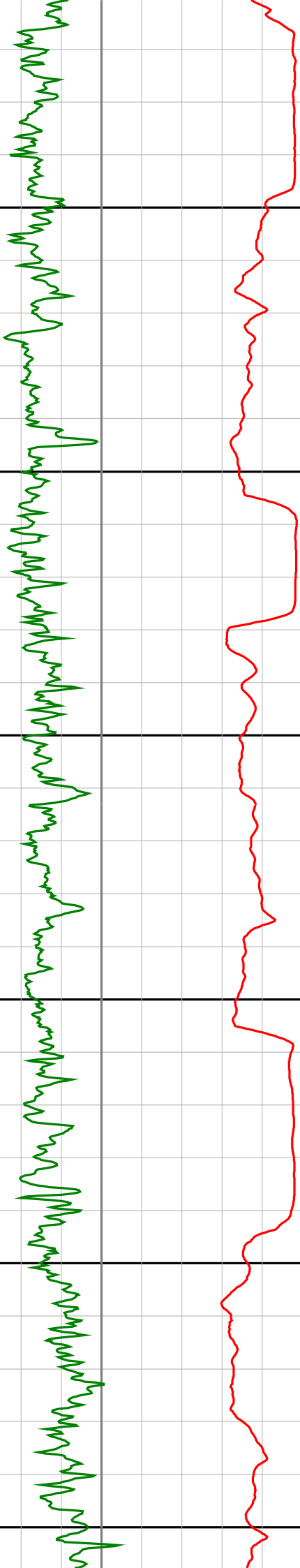
1600

1625

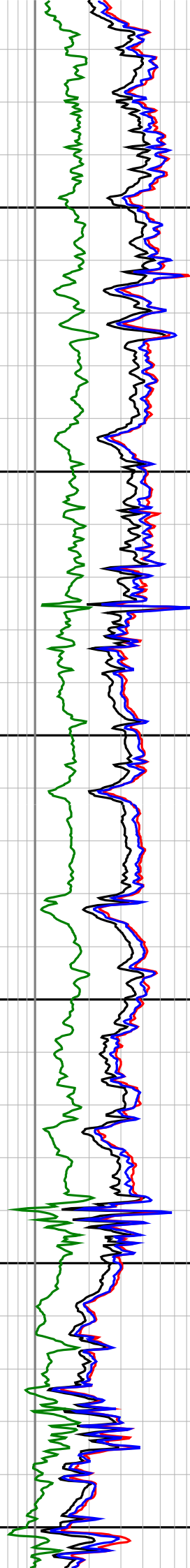
1650

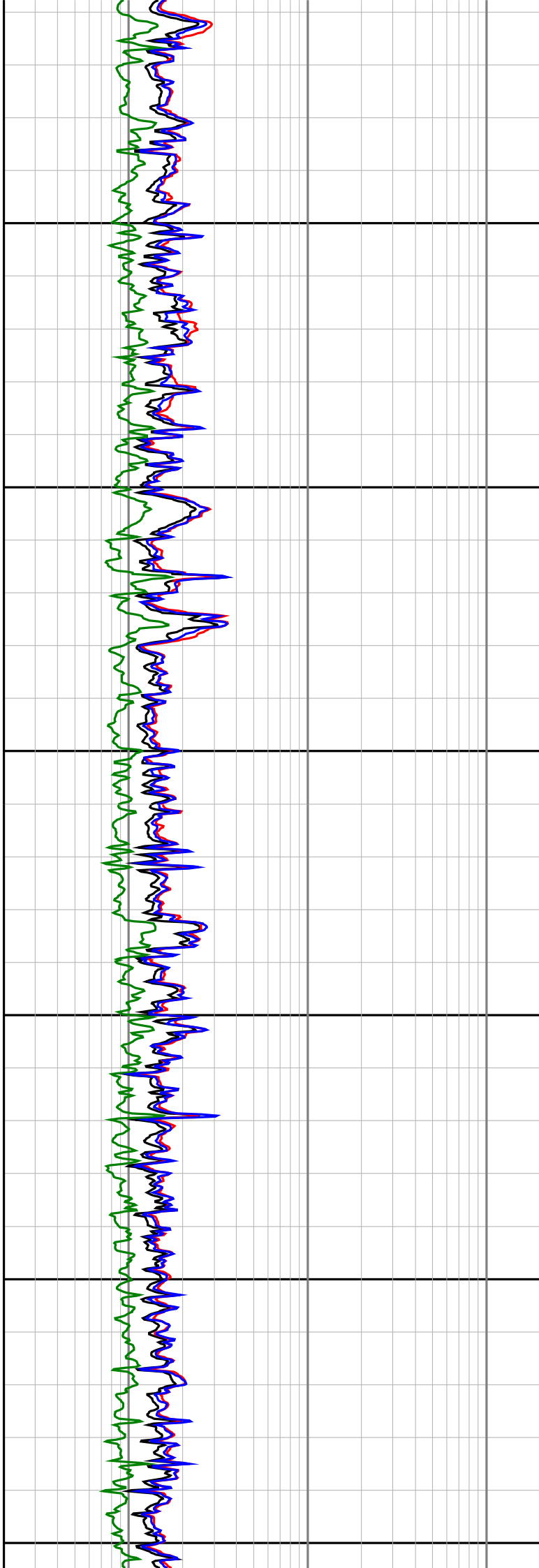
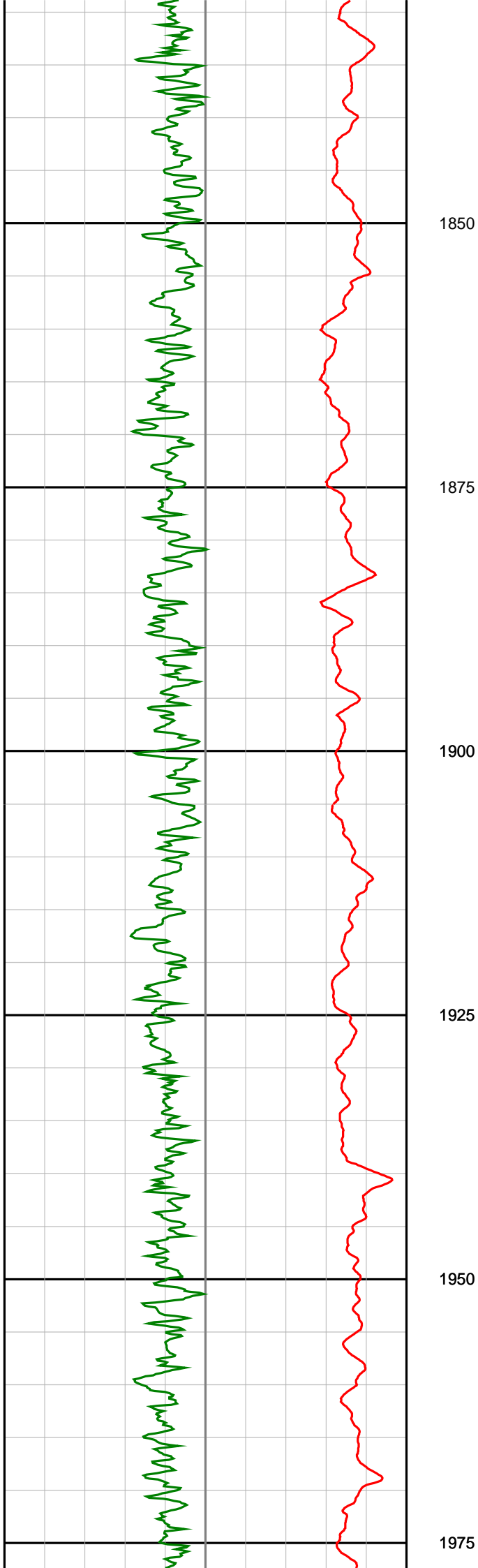
1675

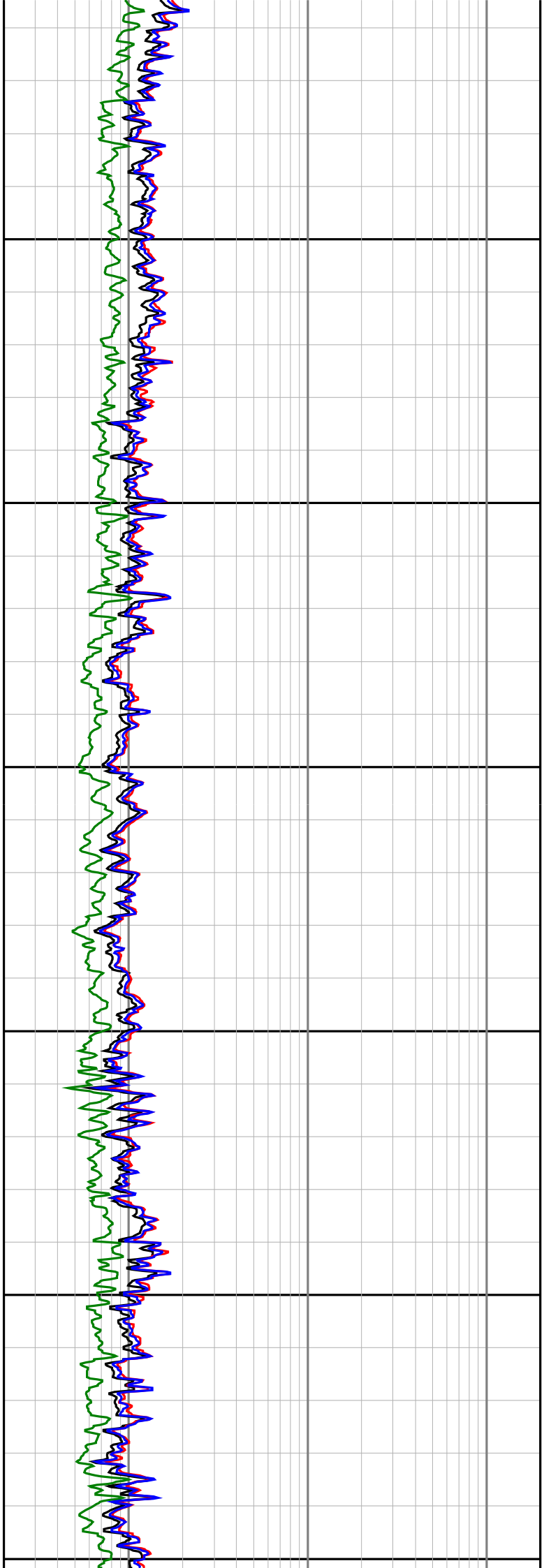
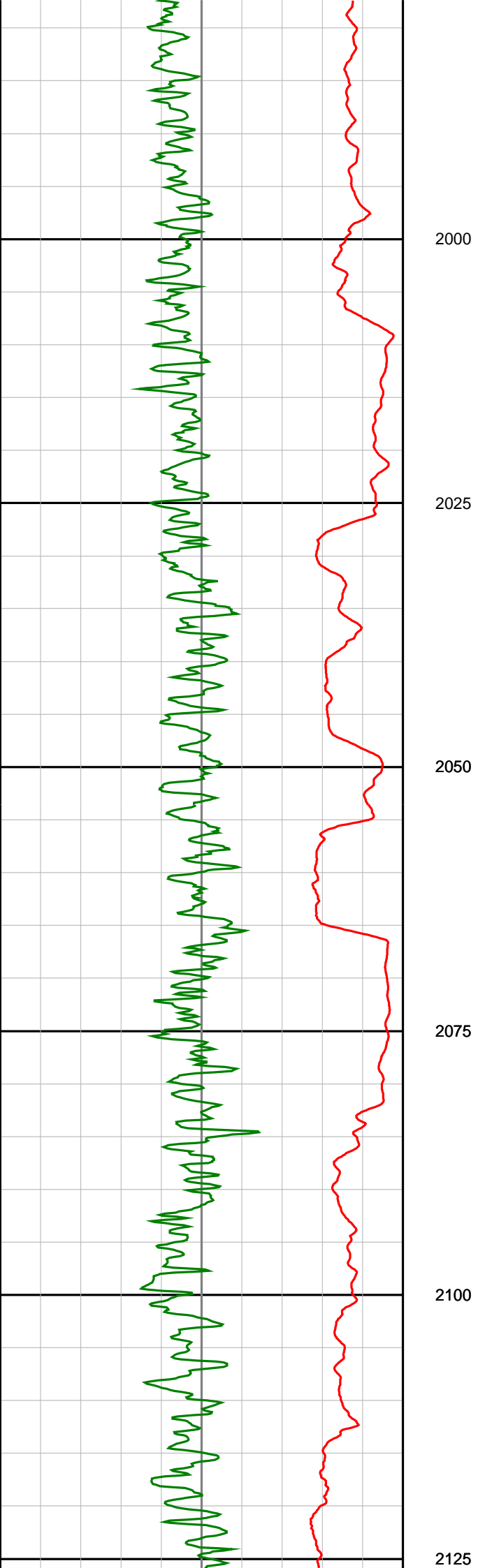


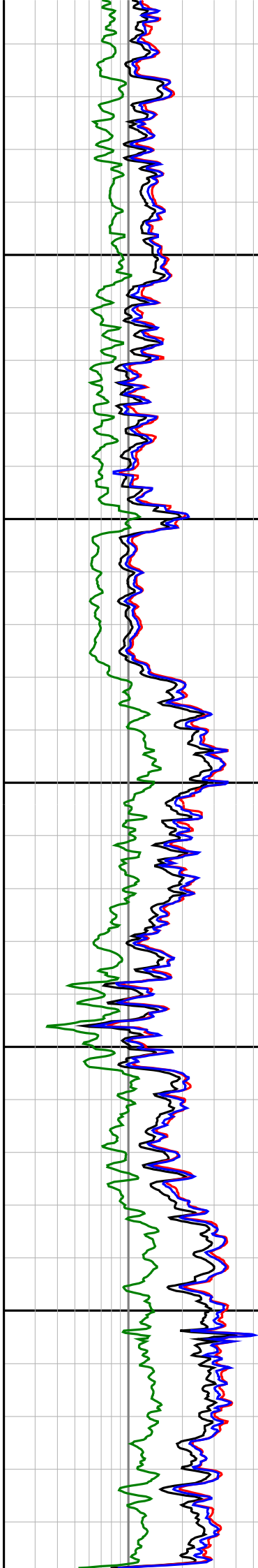
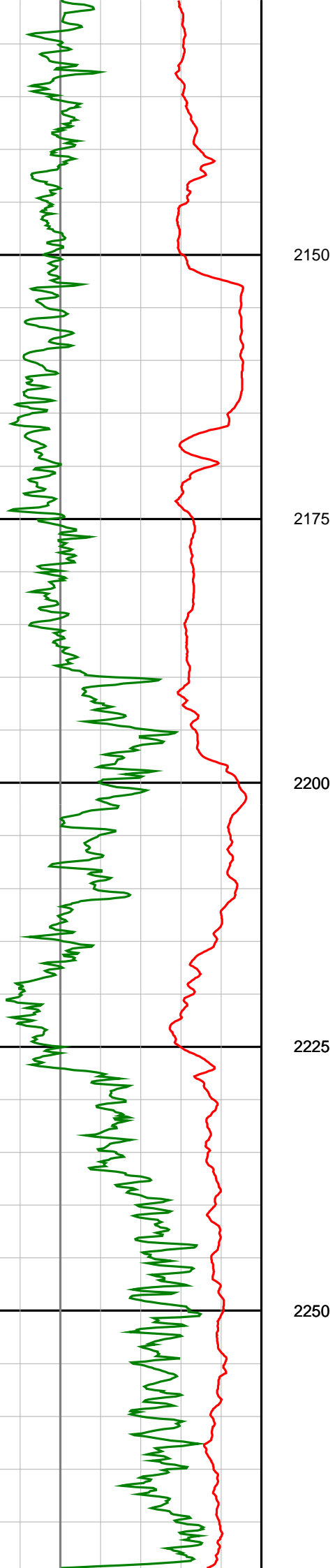


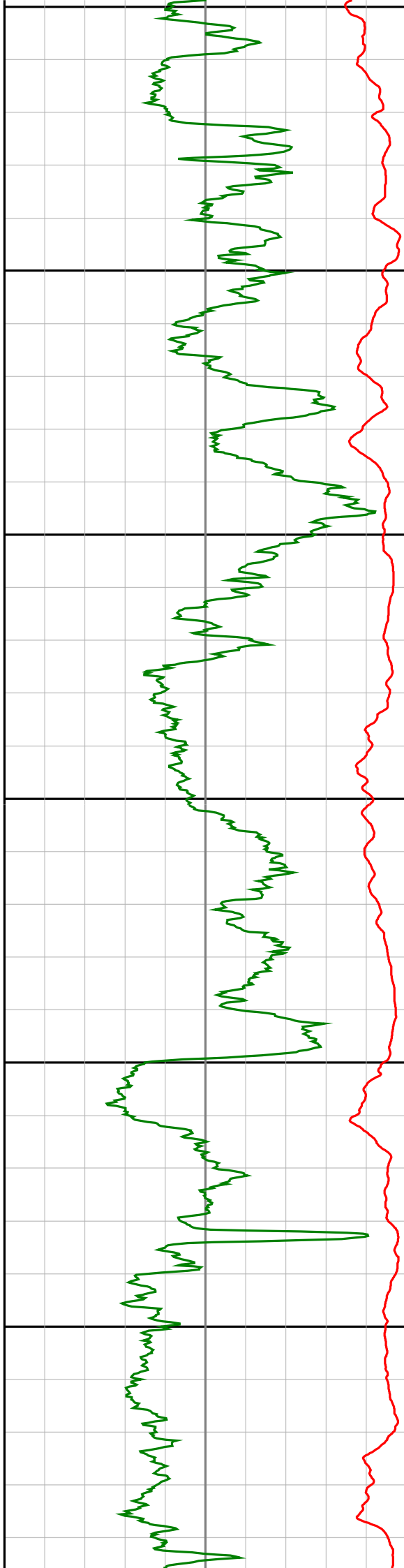
1700
1725
1750
1775
1800
1825











2275

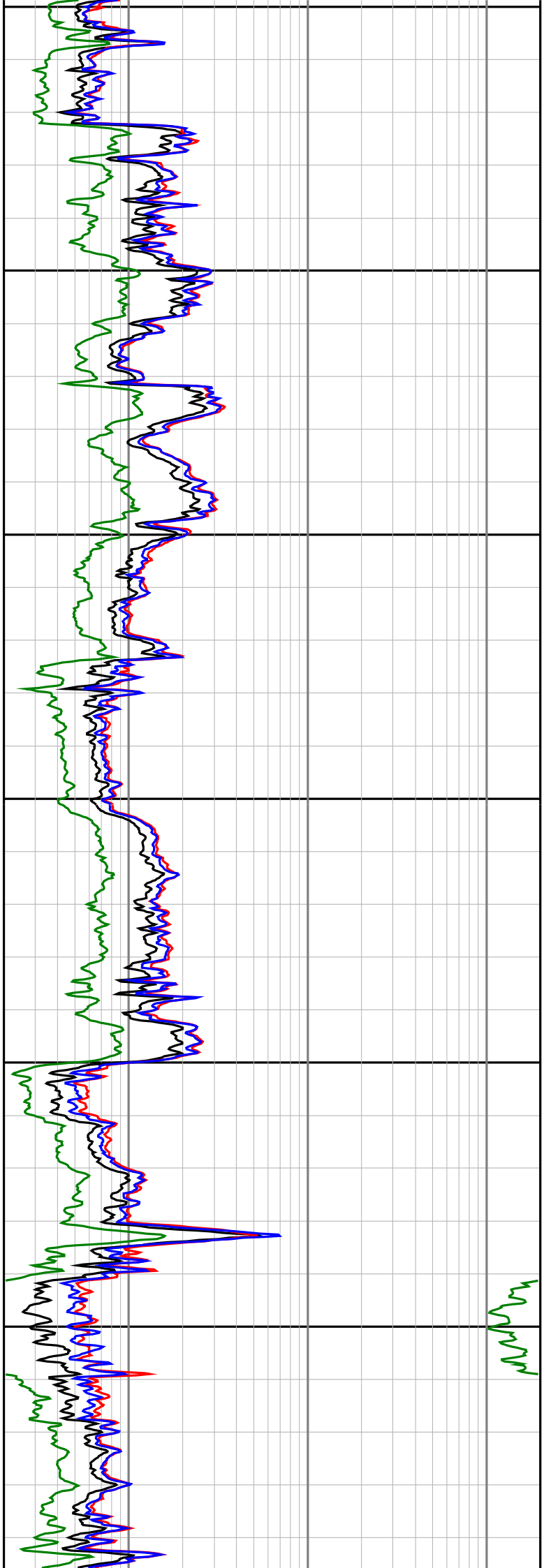
2300

2325

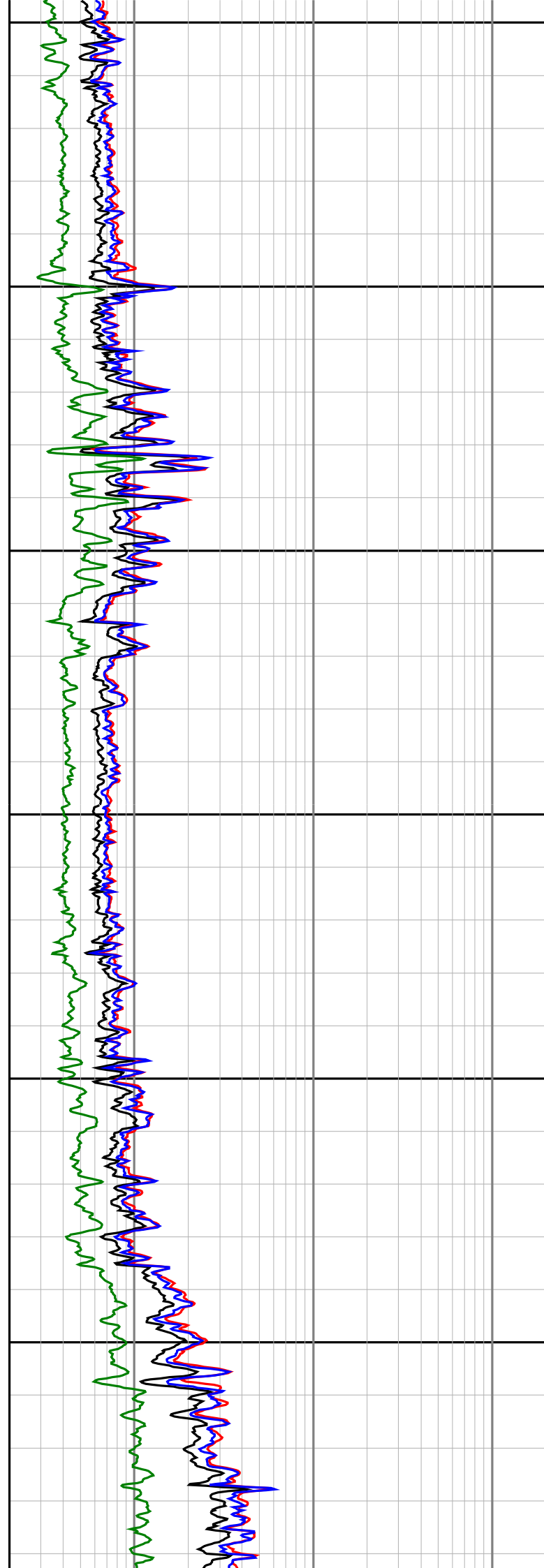
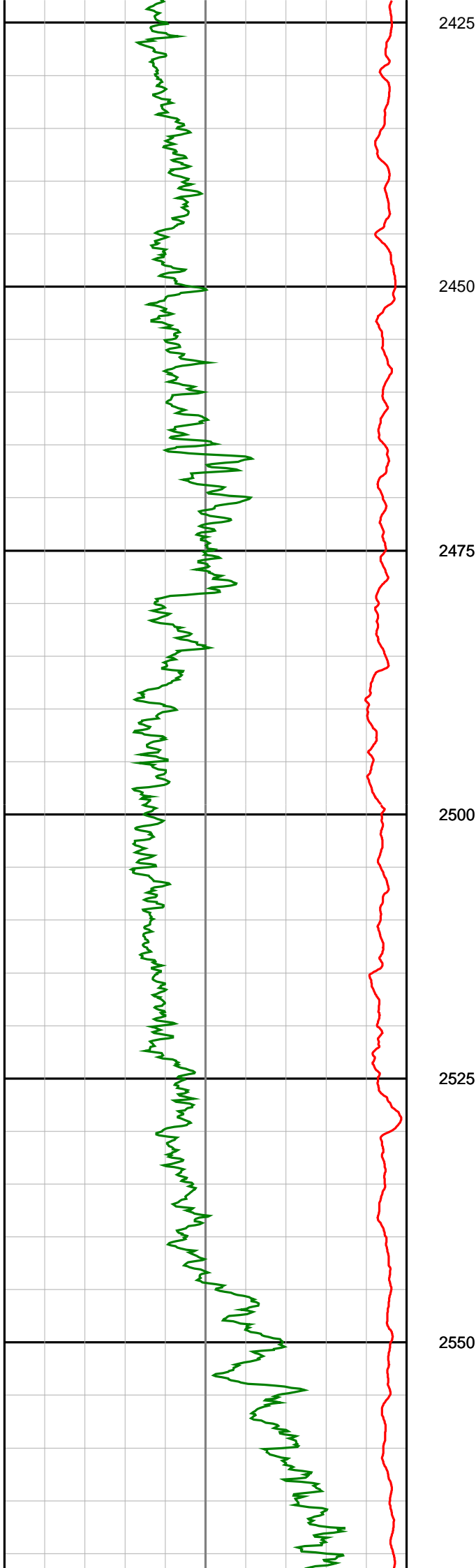
2350

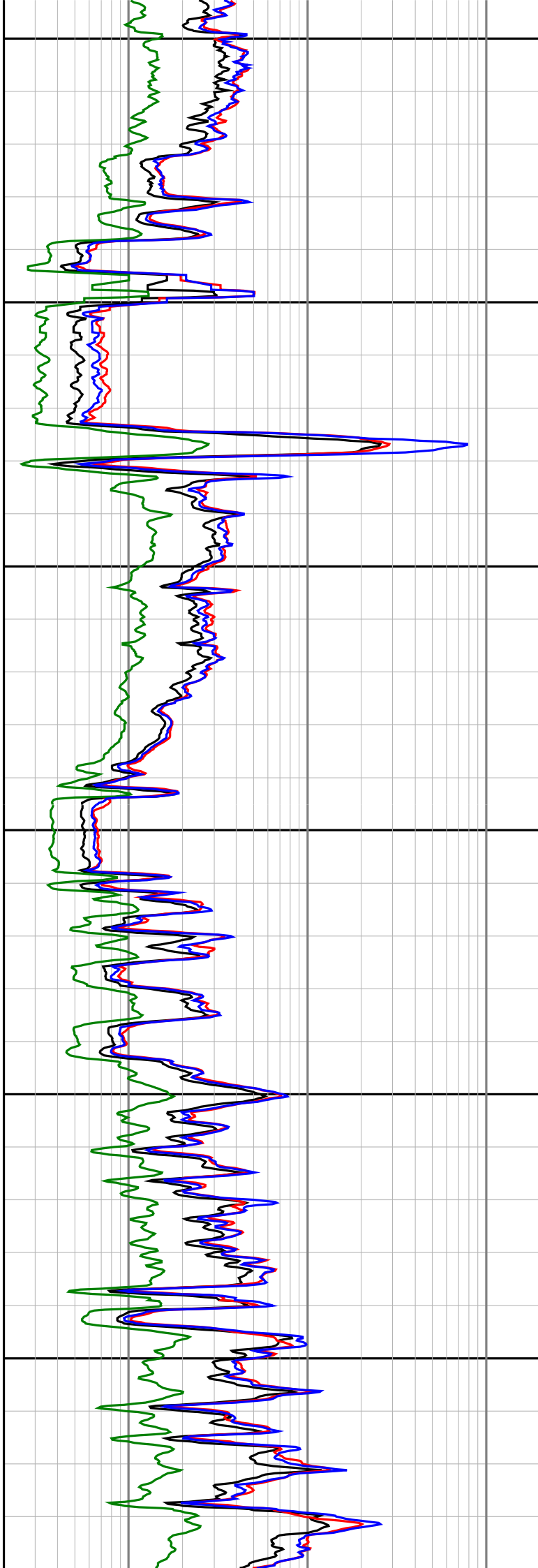
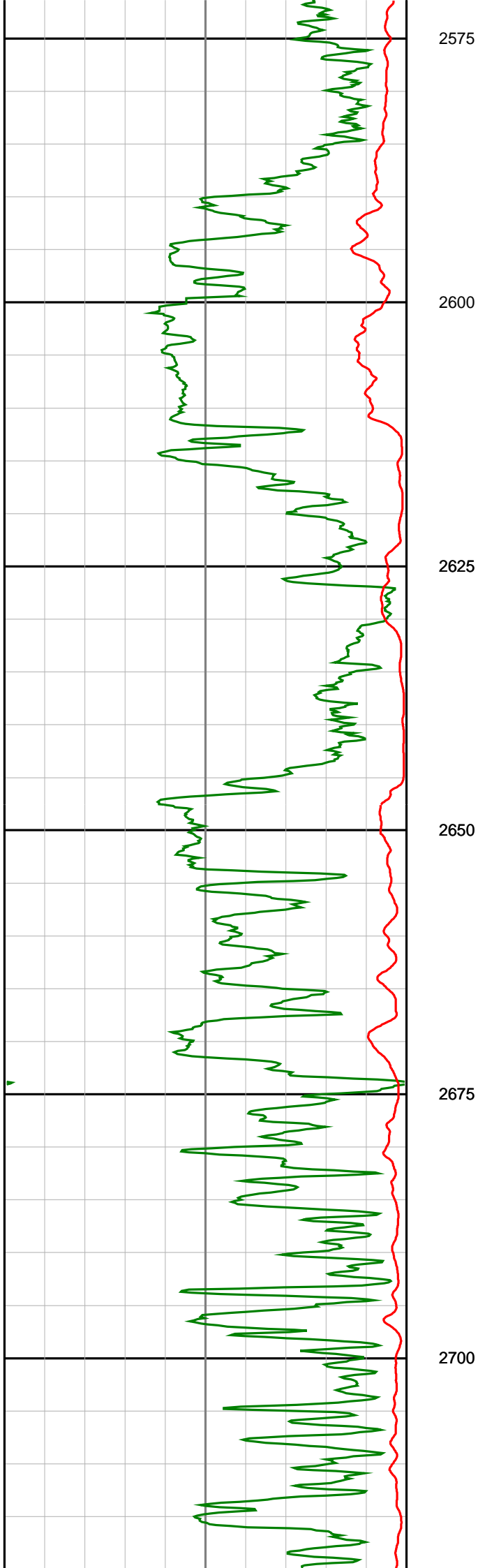
2375

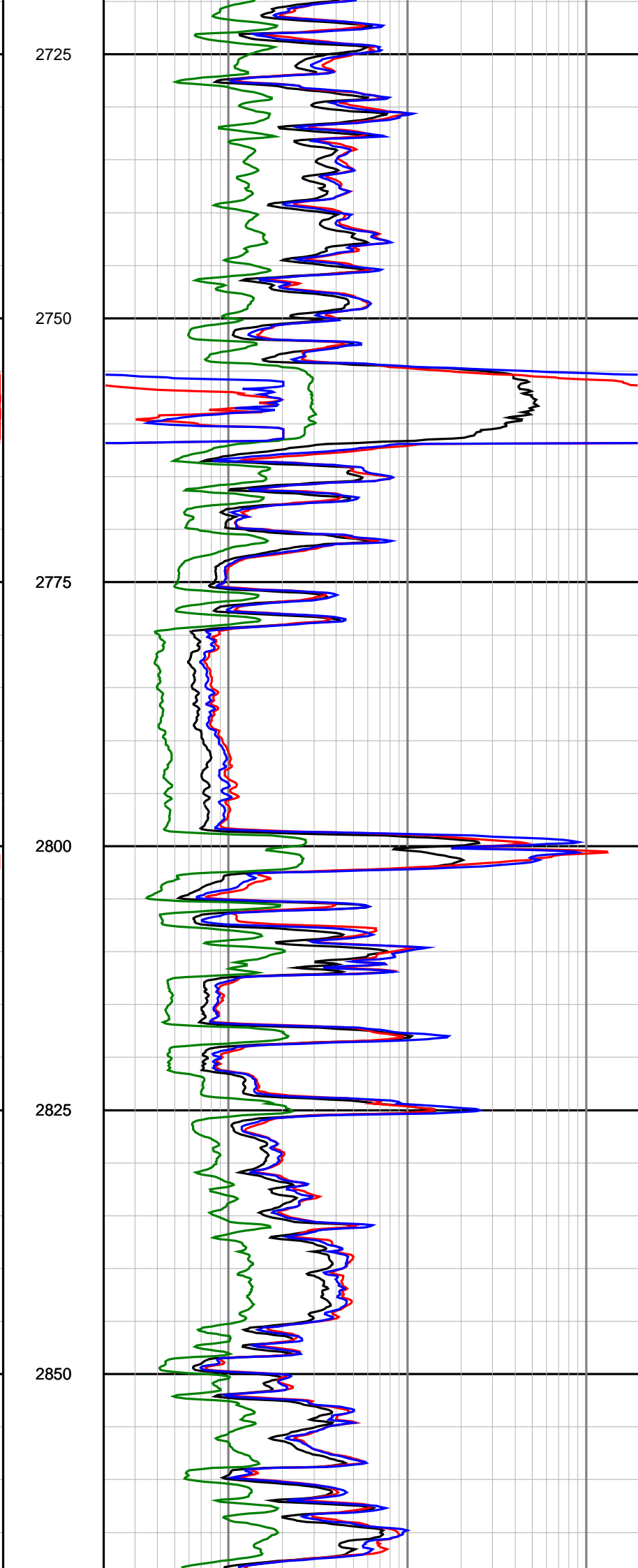
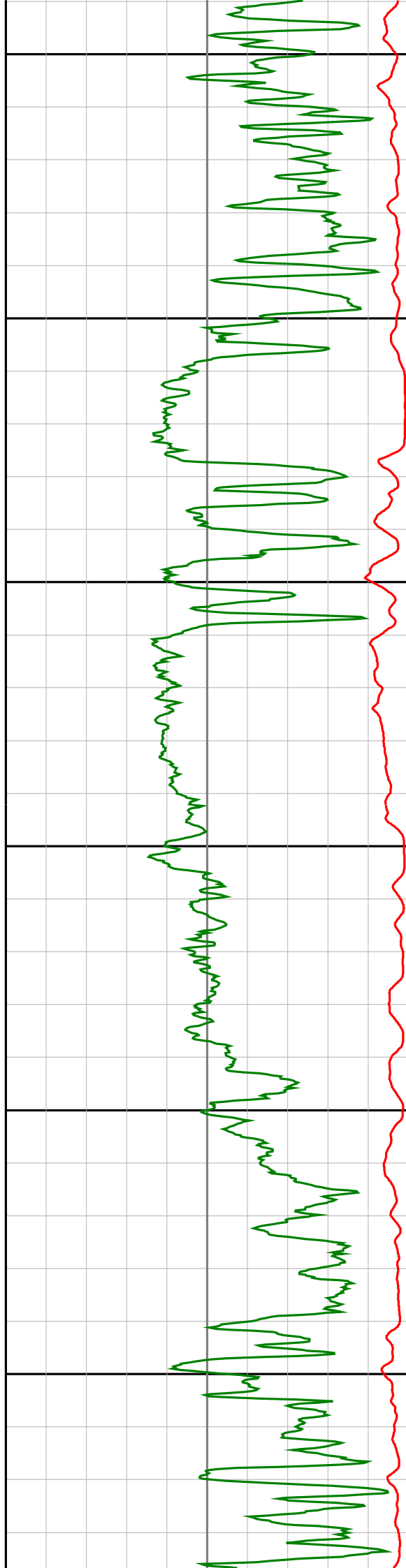
2400

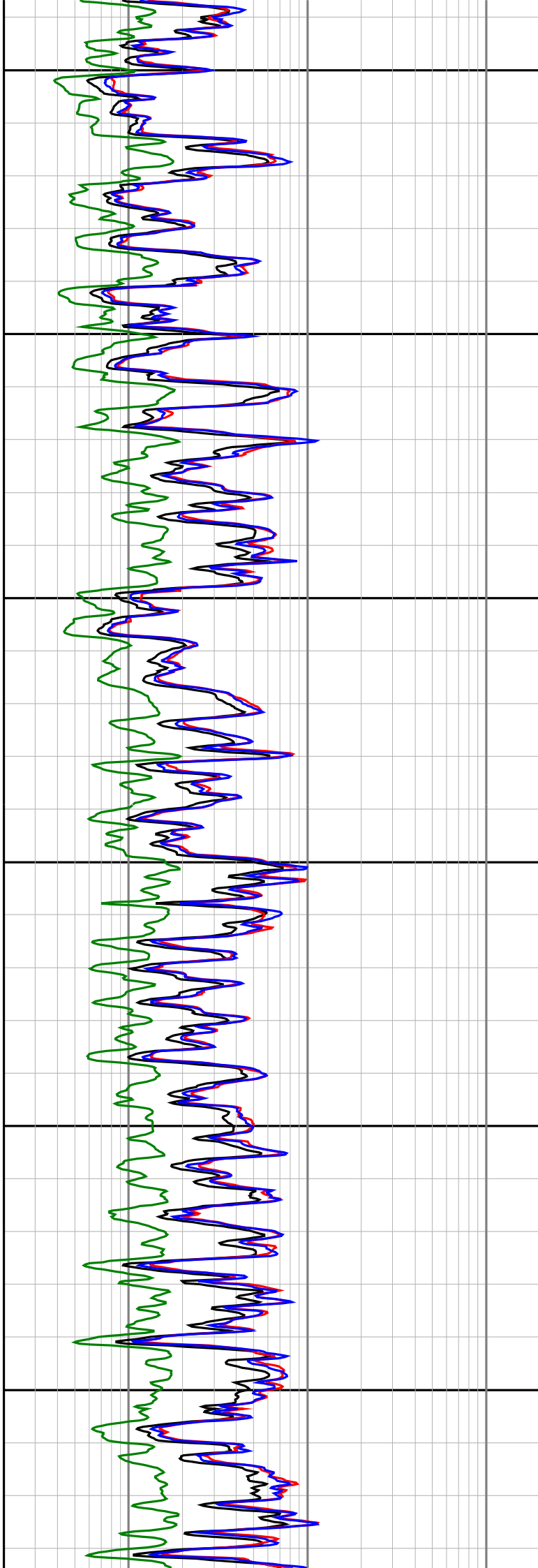
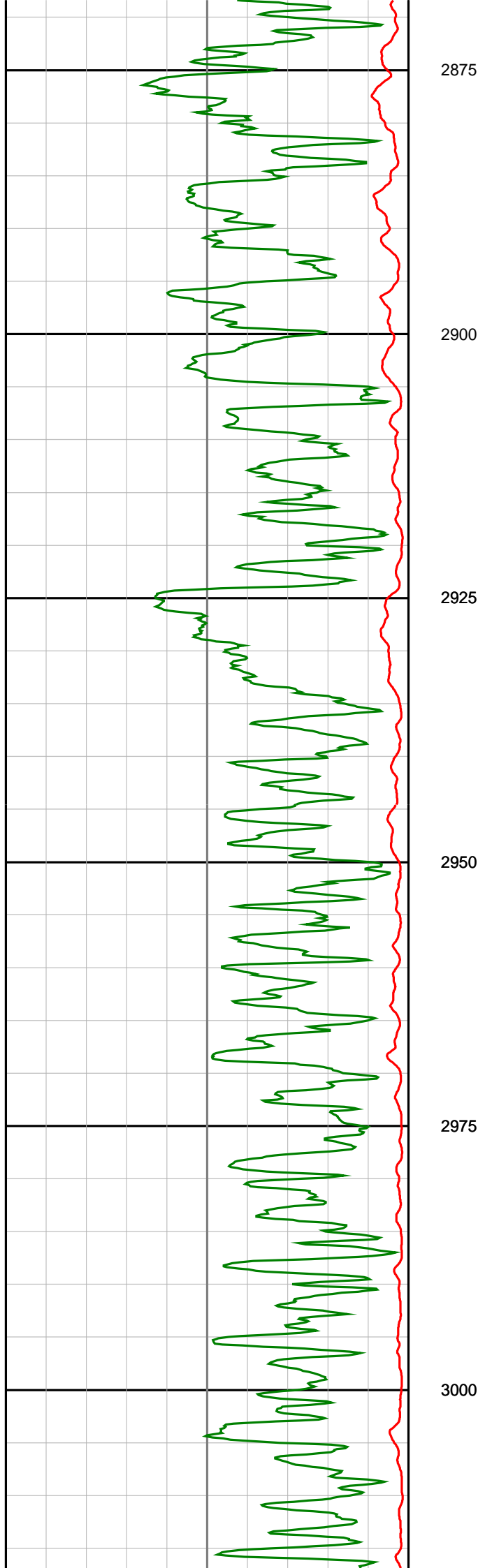


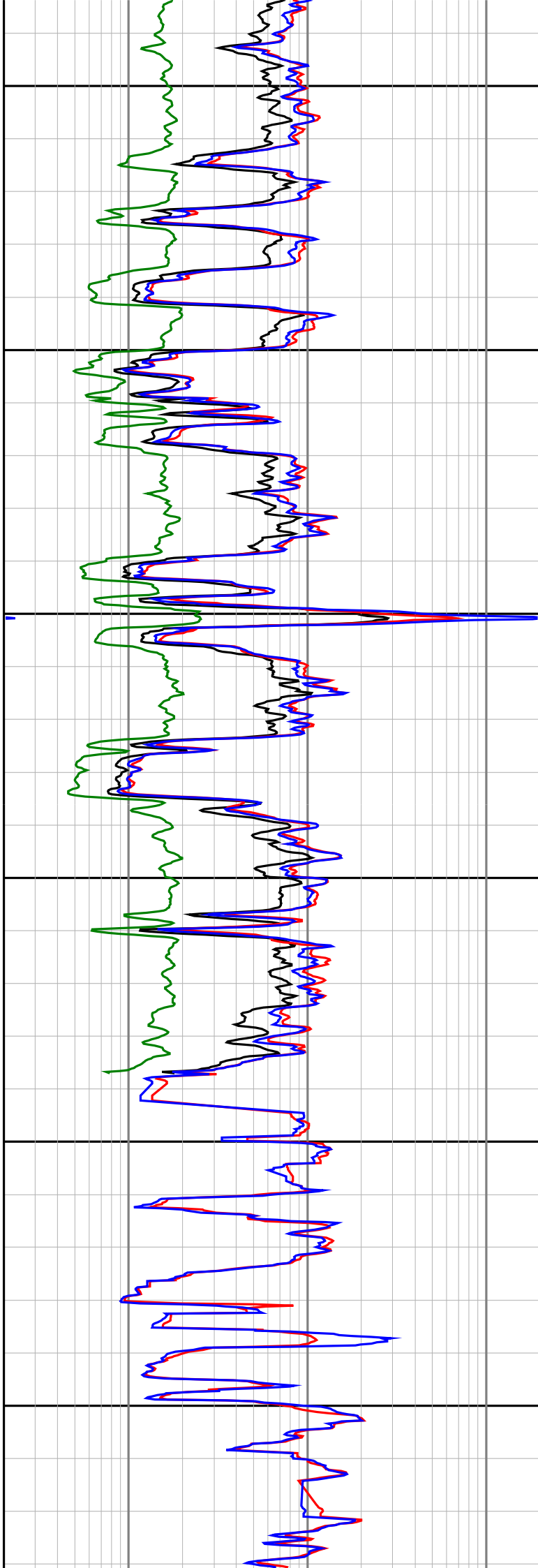
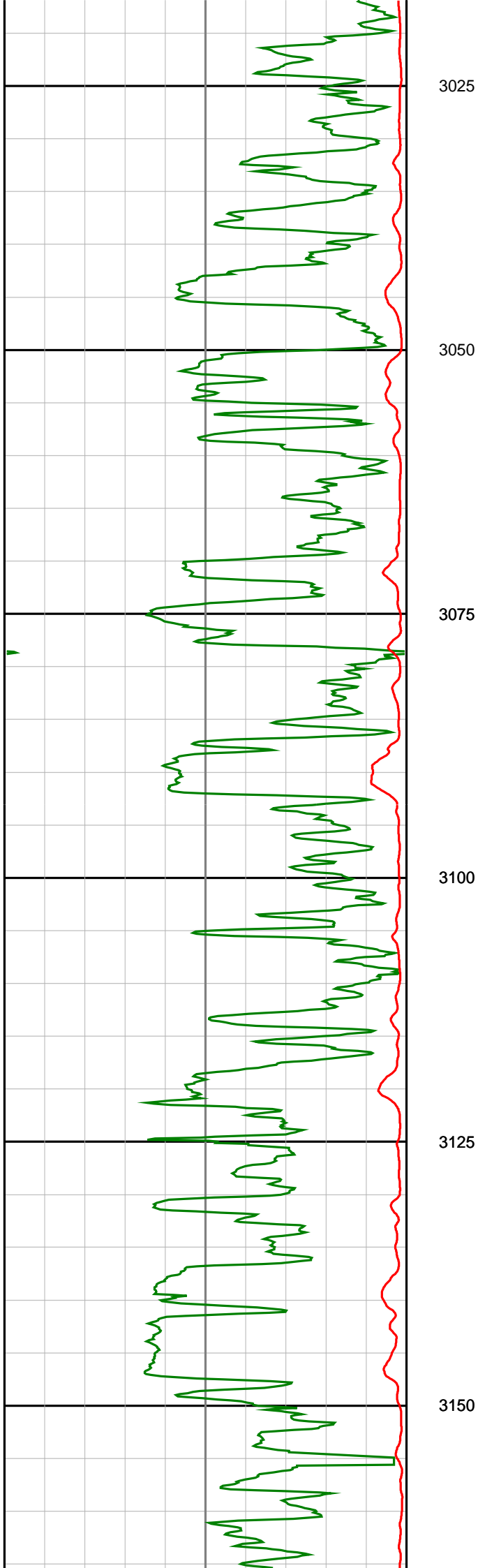
2400

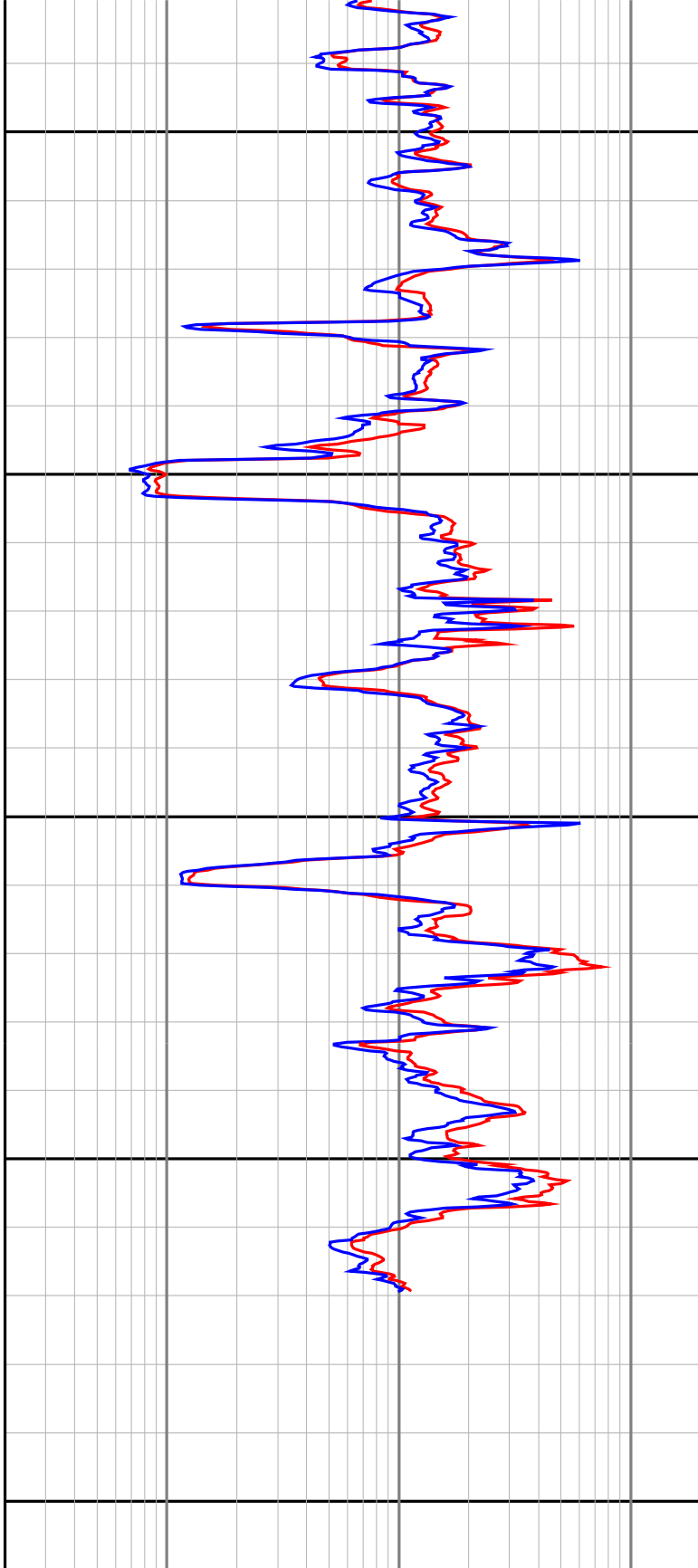
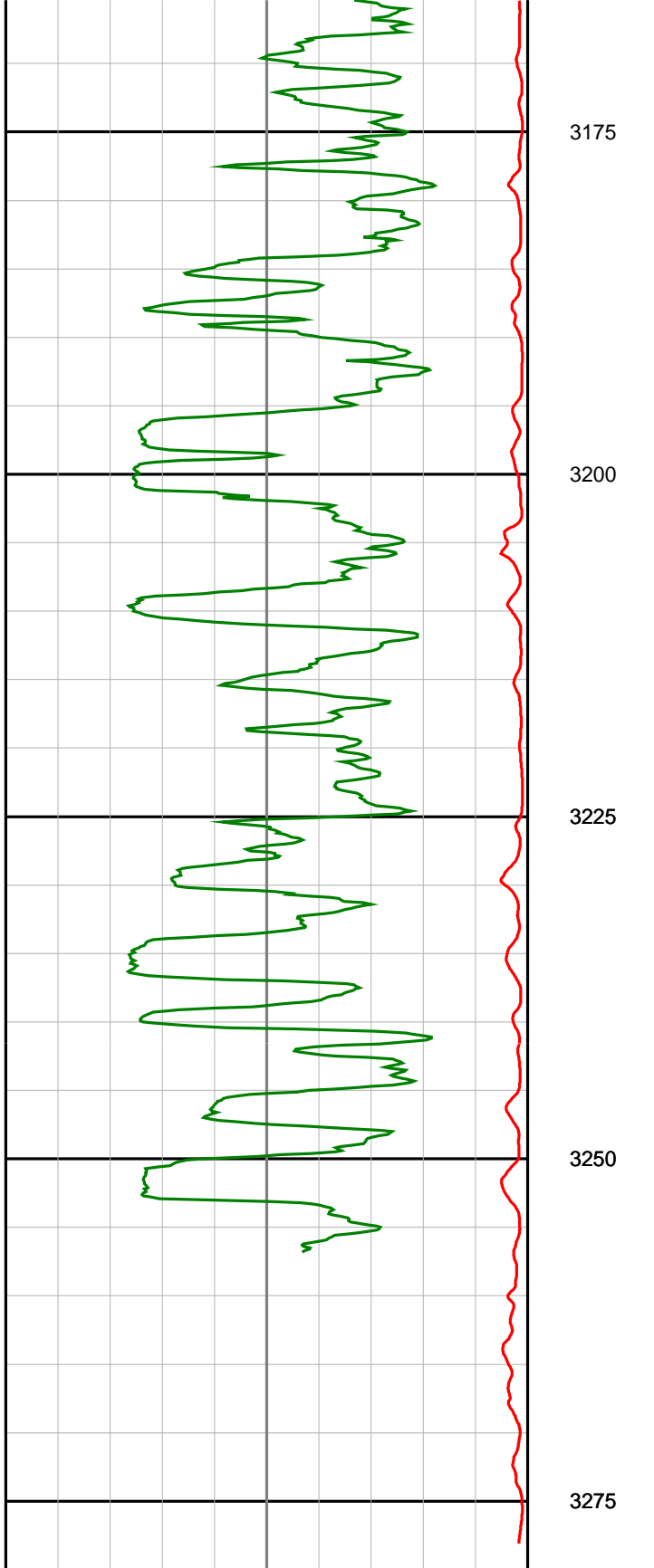












Gamma Ray (SGRC)
api
0 200

Rate Of Penetration (SROP)
m/hr
500 0

Ext Shallow Phase Res (SEXP)
ohmm
0.2 200

Shallow Phase Res (SESP)
ohmm
0.2 200

Medium Phase Res (SEMP)
ohmm
0.2 200

Deep Phase Res (SEDP)

Depth MD
1:500

